

# ACCOMMODATION

## 2021-22

LIVE  
WHERE  
THE LIFE IS



# WELCOME TO THE UNIVERSITY OF READING

We are delighted you are interested in living in our accommodation.

We work closely with UPP to provide a successful university experience that will provide you with a home away from home.

At Reading, living in our accommodation will be a great way to make new friends and meet people from different backgrounds.

Our accommodation team are happy to help you find a great place to live.

**Matthew White**

Director of Campus Commerce



## HALLS AT A GLANCE

 **4982**

STUDENT BEDROOMS  
ON OR CLOSE TO CAMPUS

 **90%**

OF STUDENTS WOULD RECOMMEND  
THEIR HALL TO OTHER STUDENTS\*

\*UPP Reading Customer Satisfaction Survey, 2019–20

ALL HALLS NO MORE THAN

 **15**

MINUTES' WALK FROM  
THE NEAREST CAMPUS

 **8**

EATING OUTLETS TO CHOOSE FROM  
AS PART OF THE CATERED PACKAGE

 **24/7**

HALLS HOTLINE TO DEAL WITH  
ANY HALLS-RELATED ISSUES  
QUICKLY AND EFFICIENTLY

**£0**

UNEXPECTED BILLS TO PAY WITH  
OUR ALL-INCLUSIVE RENT †

†Includes utility bills, basic contents insurance  
and communal cleaning

 **FREE**  
HIGH-SPEED WI-FI

 **150+**

NUMBER OF FREE EVENTS PROVIDED TO  
RESIDENTS LAST YEAR AS PART OF HOME AT  
HALLS RESIDENCE LIFE PROGRAMME

Available on both iOS and Android platforms our  
'home at halls' app is dedicated to improving your  
student experience.



# LIVING IN HALLS

## Why live in halls?

University accommodation provides a safe and secure environment for residents to live, study, meet friends and socialise as part of a supportive community.

## Great location

All accommodation is located either on the main Whiteknights campus or within a 15 minute walk.

## Range of accommodation choices to suit your needs

Express a preference for self-catered rooms or catered rooms with a contract length to suit your needs from our wide variety of room types for various budgets. Do you have a special requirement due to a medical condition? Do you want to live in a same gender flat or a quieter lifestyle flat? We have accommodation to suit all needs!

## All inclusive rent

Including:

- all utility bills
- Wi-Fi
- a basic level of contents insurance
- maintenance
- communal cleaning, including communal kitchen areas and shared bathroom facilities

## Low deposit

An amount of £250 is payable to accept your offer of accommodation. Your offer **cannot** be accepted without payment of this amount.

## Safe and secure

The halls have regular security patrols and CCTV is constantly monitored. Each group of halls has a staffed reception.

## Welfare support

A dedicated and experienced team of on-site staff wardens and hall mentors take care of all aspects of pastoral care.

## 24/7 Halls Hotline

Available 24 hours a day, 365 days of the year ensuring any halls-related issues are dealt with quickly and efficiently. This service is complemented by our handy 'home at halls' app where you can report maintenance, give feedback, register for home at halls events and receive important updates.

## Social spaces and study areas

All Hall Groups have access to a shared social space. We also have a number of study spaces within halls. Halls without study areas are able to access the closest hall's study area. For example, residents of Bridges Hall are able to use the study space within Wessex Hall.

## Community



'home at halls' is our residence life programme with a team dedicated to organising free and low-cost events for everyone living in halls at the University of Reading. Our activities involve cultural experiences, fitness and well-being, life skills, seasonal celebrations and so much more! We welcome students of all ages to participate, meet new people, and make the most of living within the University's community.

## JOIN THE HOME AT HALLS COMMUNITY



Arts & Crafts



Festive fun



Day trips



Games/Quiz's



Competitions

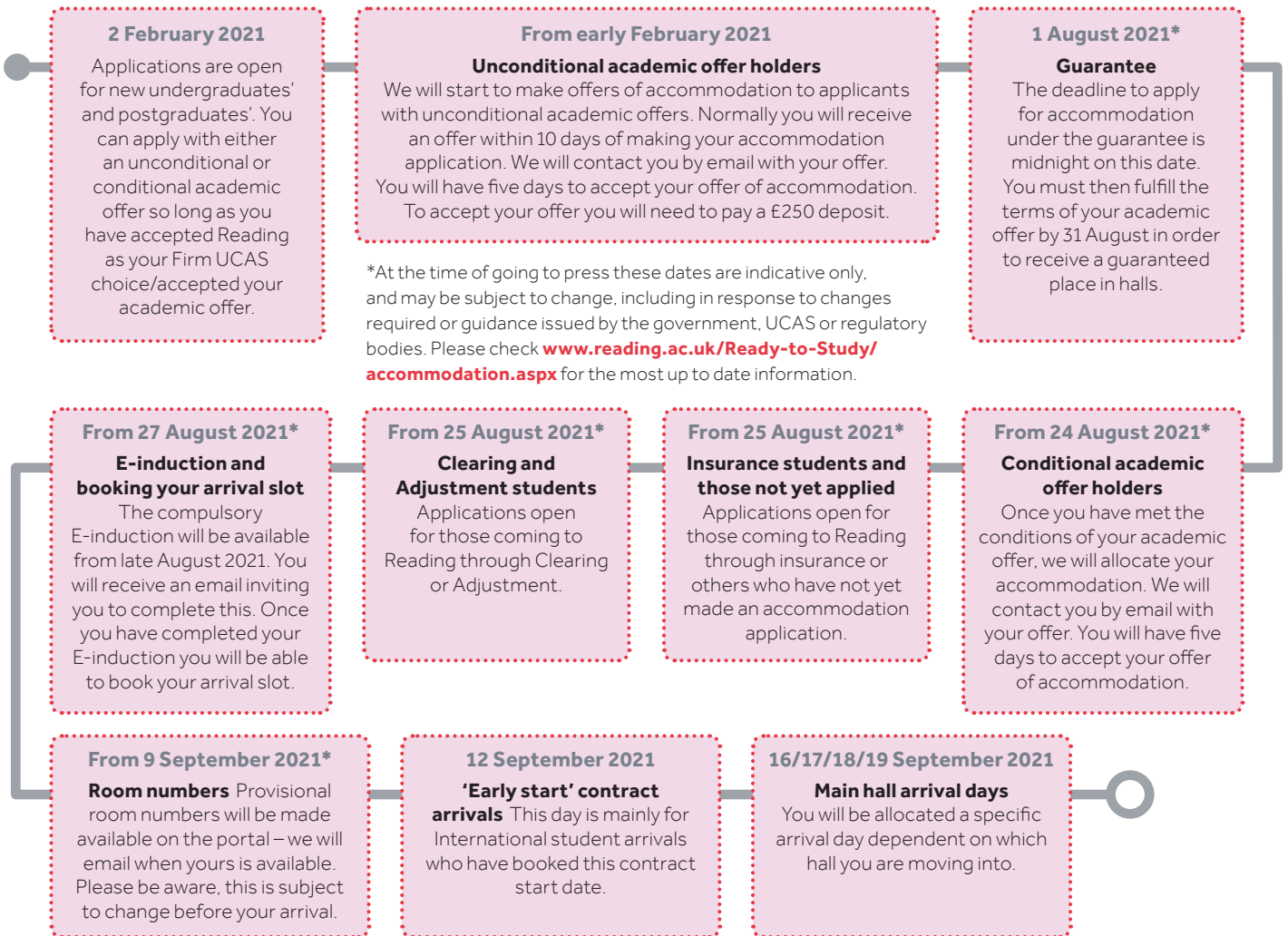
home at halls offers a variety of both online and in-person events and activities for hall residents



Baking

# APPLYING FOR ACCOMMODATION

## Accommodation application timeline 2021–2022



## Accommodation guarantee

You will be guaranteed **an offer** of a place in hall if you are:

- a **new undergraduate** who holds Reading as a firm UCAS choice **and** applies for accommodation by 23:59 on 1 August **and** satisfies the conditions of your academic offer by 31 August of your year of entry \*
- a **new postgraduate** who has accepted an offer from the University **and** applies for accommodation by 23:59 on 1 August **and** satisfies any conditions of your academic offer by 31 August of your year of entry\*.

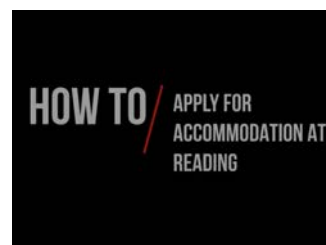
\* Subject to restrictions, applications made by 1 August 2021 are guaranteed an offer of accommodation. Our offer may not meet your stated preferences. Please see the [Accommodation Policy](#) for more details.

## Insurance choice

If you choose the University of Reading as your insurance choice you are **not guaranteed** an offer of a place in halls accommodation. You will be able to apply for accommodation once Reading becomes your firm choice.

## How to make an application

All applications are made online through the accommodation pages of the RISIS web applicant portal. You will be sent an email when you are eligible to make your application for accommodation. There is no charge for making an application. To accept your offer of accommodation you must make a payment of a £250 deposit.



Visit the **Applying for Accommodation** webpages to watch our helpful video on how to apply for accommodation.

For information on how to pay your Accommodation Fees, see [page 8](#).

**You must add [accommodationonline@reading.ac.uk](mailto:accommodationonline@reading.ac.uk) to your email's trusted/safe sender list, to ensure you receive our emails!**

# CHOOSING YOUR ACCOMMODATION THINGS TO CONSIDER

## STEP 1 Applying for just you, or are you a couple or a family?

Most students need a room just for themselves. However we do provide accommodation options for those applying with a family or as a couple. Get in touch with the Accommodation Office at [accommodationonline@reading.ac.uk](mailto:accommodationonline@reading.ac.uk) for more information on family and couples accommodation.

## STEP 2 Catered or self-catered?

Keen on cooking? Or would you prefer your meals catered? Select from a range of options; from fully catered to optional 'top-up' eating plans. [Page 9](#) contains more information.

## STEP 3 Your preferred room type

When thinking about your room type, there are a few different factors to consider. For example, are you happy to share a bathroom? Your budget will play a big part and needs careful consideration. [Pages 11 to 15](#) of this booklet can help you decide. Due to demand we may not always be able to meet your room preference. You need to make at least three choices of preferred accommodation. The more preferences you pick, the more likely we will be able to meet your requirements.

## STEP 4 Preferred contract length?

We have different contract lengths available for full year and shorter periods of study, with entry points in September and January. Full-time students have the choice of the following contract lengths\*:

- **40 weeks (Sept to June):** This is the most popular option for undergraduate students and postgraduates who are not required to be in Reading for their course over the Summer vacation. Please note that some rooms available at St George's and Benyon Hall are on 38 weeks.
- **51 weeks (Sept to Sept):** Postgraduate students often select this option but it is also suitable for any undergraduates who would like to use their room over the summer vacation. You are advised to check with your course to see which contract length will be most appropriate for you. If you are in doubt please check.

**38 weeks (Sept to mid-June):** There are a limited number of these contracts available for the 2021/22 academic year.

\*Not all contract lengths are available in each hall; please see the summary table on [page 15](#) for a complete overview of our accommodation offering.

## Specific requirements

When making your application, you have the opportunity to note any specific requirements. This includes single gender accommodation, living in a 'quieter lifestyle' area and any medical conditions such as needing a wheelchair accessible room, or other conditions which may affect your time in halls. Please ensure you complete this part of the application accurately to ensure we match your requirements as closely as possible.

**SG Single gender accommodation** means sharing a house/flat (not a room) with other students of the same gender. If you require single gender accommodation please state this within the **specific requirements text box**. Please be aware in either male or female single gender accommodation guests (including overnight guests) may be of a different gender. Visiting staff members (cleaners, security, maintenance staff etc.) may also be of a different gender.

**QL Quieter lifestyle.** We aim to allocate students together who consider themselves to have a 'quieter lifestyle'. Please note, we can't guarantee a permanent quiet environment. Communal living will always involve some level of noise, including from outside the building. However by placing students requesting a quieter lifestyle together we hope to better meet the different expectations of our students.

To see which halls have quieter lifestyle areas and single gender areas please see [pages 11–15](#).

For more information see our [specific requirements](#) web page.



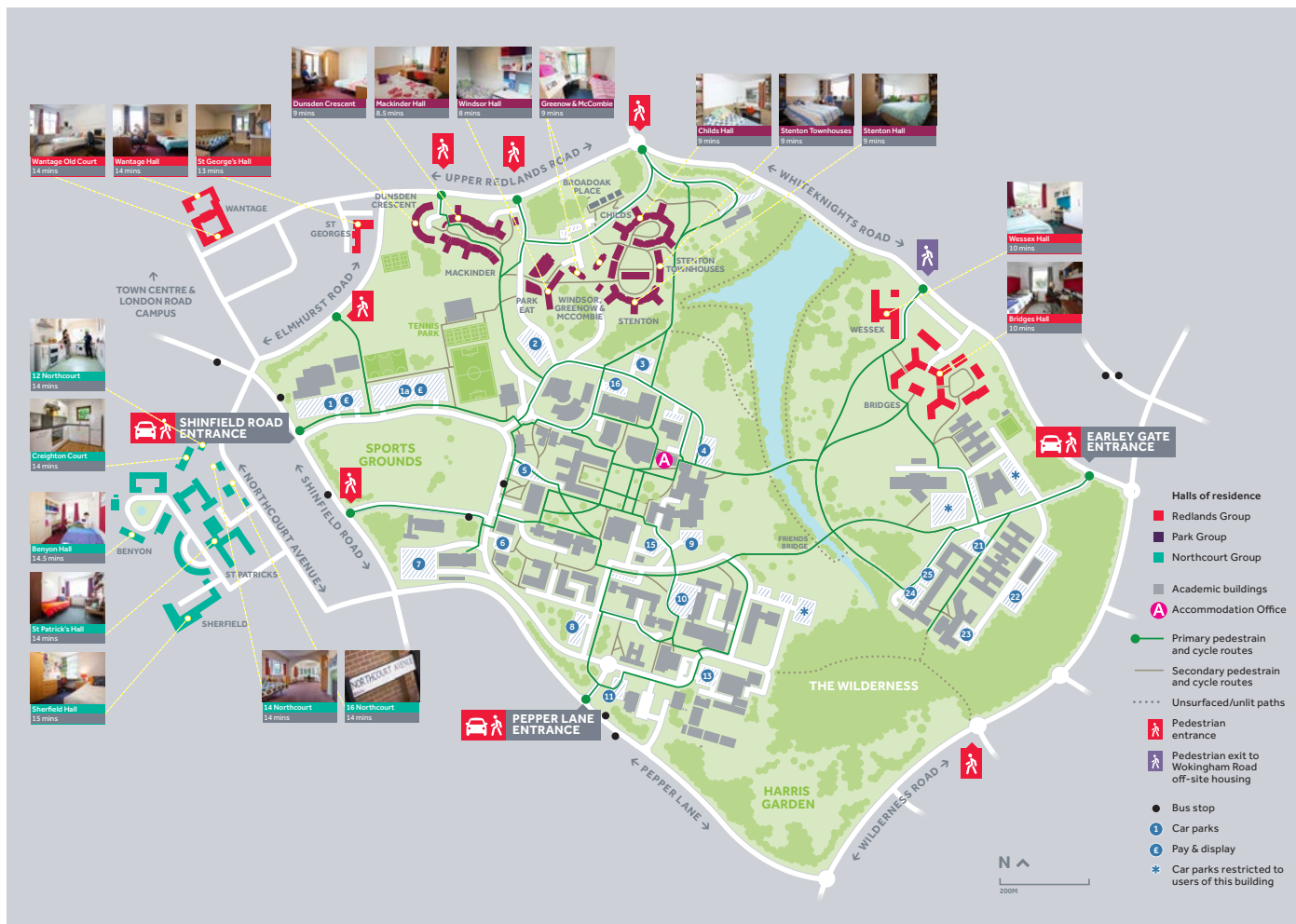
### Using the free text box

On your application there is space for you to tell us about any other requirements you may have – this can be anything that you think we need to know! This could include further preferences such as an alcohol-free environment, living near a friend or specific information about adaptations for a medical condition.



# HALL LOCATIONS

## Whiteknights



## Postgraduate students

There are a range of accommodation options available for postgraduate students. We do not offer dedicated postgraduate halls but we do our best to allocate you in areas sharing with other postgraduate or more mature students where possible. Our 51-week contract option is often popular with postgraduate students, although you should check with your school to find out if you will need to be on campus over the summer vacation for your particular course for your particular course. A number of our halls have designated 'quieter lifestyle' areas which postgraduates often prefer – please indicate this in your application. Some postgraduate courses start earlier than the standard start of the academic year – we can usually help if this is the case although the selection of rooms available to you may be reduced. We also offer accommodation for families, couples, and mature students that you can apply for if this better meets your needs. For more information visit [www.reading.ac.uk/ready-to-study/accommodation/accommodation-families-mature-students.aspx](http://www.reading.ac.uk/ready-to-study/accommodation/accommodation-families-mature-students.aspx). When you make an application you will need to follow the Postgraduate pathway by selecting the postgraduate option under 'New Students'.



# ACCOMMODATION COSTS



## Catered Halls

Room type	Hall	Cost per week £	Cost per night £	Total 40 weeks £
<b>ROOM (SHARED BATHROOM FACILITIES)</b>				
<b>Standard</b>	St Patrick's Hall*	130.11	18.59	5204.43
	Wantage Hall	155.50	22.21	6219.99
<b>Upgraded</b>	Windsor Hall (single bed)	167.40	23.91	6695.99
	Windsor Hall (4ft wide bed)	169.65	24.23	6785.99
<b>ROOM WITH WASHBASIN (SHARED BATHROOM FACILITIES)</b>				
<b>Standard</b>	St Patrick's Hall*	130.11	18.59	5204.43
	Wantage Hall	163.20	23.31	6527.99
<b>Upgraded</b>	Wantage Hall	171.25	24.46	6849.99
	Windsor Hall (single bed)	169.65	24.23	6785.99
	Windsor Hall (4ft wide bed)	171.25	24.46	6849.99
<b>ROOM WITH EN-SUITE SHOWER</b>				
<b>En-suite</b>	Dunsden Crescent	201.28	28.75	8051.19

\* see Silver eating plan, p8



## Self-catered Halls

Room type	Hall	Cost per week £	Cost per night £	Total 40 weeks £	Total 51 weeks £
<b>ROOM (SHARED BATHROOM FACILITIES)</b>					
<b>Standard</b>	Sherfield Hall	144.48	20.64	5779.20	–
	St Patrick's Hall	131.25	18.75	5250.00	–
<b>Standard with double bed</b>	Northcourt Houses	144.48	20.64	–	7368.48
<b>Premium</b>	Bridges Hall	144.48	20.64	5779.20	7368.48
<b>Townhouse</b>	Bridges Townhouse	161.00	23.00	6440.00	8211.00
	Stenton Townhouse	164.99	23.57	6599.60	8414.49
<b>ROOM WITH WASHBASIN (SHARED BATHROOM FACILITIES)</b>					
<b>Standard</b>	Northcourt Houses (smaller room)	131.25	18.75	–	6693.75
	Northcourt Houses	144.48	20.64	–	7368.48
<b>Standard with double bed</b>	Northcourt Houses	144.48	20.64	–	7368.48
<b>Upgraded</b>	Wessex Hall	131.25	18.75	5250.00	–
	St George's Hall	133.70	19.10	5348.00	6818.70
<b>Upgraded with double bed</b>	St George's Hall	144.48	20.64	5779.20	7368.48
<b>ROOM WITH ENSUITE SHOWER</b>					
<b>En-suite</b>	Benyon and Sherfield Halls	161.00	23.00	6440.00	8211.00
	Greenow and McCombie Halls	164.99	23.57	6599.60	–
	St George's Hall	161.00	23.00	6440.00	8211.00
<b>En-suite double bed</b>	Northcourt Houses	161.00	23.00	–	8211.00
<b>Premium en-suite</b>	Benyon and Childs Hall	184.24	26.32	7369.60	9396.24
	Mackinder and Stenton Halls	184.24	26.32	7369.60	–
	Bridges Hall	184.24	26.32	–	9396.24

continued over

Room type	Hall	Cost per week £	Cost per night £	Total 40 weeks £	Total 51 weeks £
<b>STUDIO ROOM AND STUDY SUITE</b>					
<b>Study Set – single occupancy</b> (room with adjacent study area)	St Patrick's Hall	144.48	20.64	5779.20	–
<b>Studio room</b>	St George's and Wessex Halls	206.85	29.55	8274.00	10,549.35
<b>Studio room with double bed</b>	Northcourt Houses	206.85	29.55	–	10,549.35
<b>ACCOMMODATION SUITABLE FOR FAMILIES AND COUPLES</b>					
<b>Room with washbasin and double bed</b> (shared bathroom)	Northcourt Houses	155.75	22.25	–	7943.25
<b>Room with double bed</b> (shared bathroom)	St Patrick's Hall	164.99	23.57	6599.60	–
<b>Study suite</b>	Northcourt Houses	184.24	26.32	–	9396.24
<b>En-suite with double bed</b>	Northcourt Houses	184.24	26.32	–	9396.24
<b>Studio with double bed</b>	Northcourt Houses and Benyon Hall	216.30	30.90	8652.00	11,031.30
<b>One-bed flat</b>	St George's Hall	206.85	29.55	8274.00	–
	Sherfield, St George's and Wantage Halls	231.00	33.00	9240.00	11,781.00
	Creighton Court and Northcourt Houses	231.00	33.00	–	11,781.00
<b>Two-bed flat</b> (one double and one single bed) (two double beds)	Creighton Court	257.25	36.75	–	13,119.80
	Greenow House and St Patrick's Hall	267.75	38.25	10,710.00	–
	Creighton Court	267.75	38.25	–	13,655.25

## Payment

Accommodation payments are due termly. The specific payments and their due dates can be viewed on your accommodation offer via the [RISIS web portal](#).

If you are on a 40 week contract your fees will be split into three unequal payments of 40%, 40% and 20%.

If you are on a 51 week contract your fees will be split into four unequal payments of 35%, 35%, 15% and 15%.

## Deposit

You will need to pay a deposit of £250 to accept your offer of accommodation.



## Catering

For students living in catered halls, the following terms and conditions apply [www.hospitalityuor.co.uk/clever-cuisine/](http://www.hospitalityuor.co.uk/clever-cuisine/). Please ensure you read and fully understand the terms of the catering package you are signing up to.

\* Silver eating plan – a low-cost catered eating plan is included which is bespoke to St Patrick's Hall. This is intended to allow you to purchase your main meal each day during the 31 weeks of term via a weekly cash allowance of £40.53 – this allowance can be used at St Patrick's Hall, Park Eat or Eat at the Square.

## Contract dates

You will find your contract start date in your accommodation offer via the RISIS web portal. Start dates are specific to each hall of residence, as an indication:

- Contract start date 17 September 2021, ends 24 June 2022 (40 weeks) or 9 September 2022 (51 weeks)
- Contract start date 18 September 2021, ends 25 June 2022 (40 weeks) or 10 September 2022 (51 weeks)
- Contract start date 19 September 2021, ends 26 June 2022 (40 weeks) or 11 September 2022 (51 weeks)

## Contact us

If you'd like to speak to one of our friendly team members in the Accommodation Office, email

[accommodationonline@reading.ac.uk](mailto:accommodationonline@reading.ac.uk)

or call **0118 200 5011**.

Visit [www.reading.ac.uk/ready-to-study/accommodation/university-accommodation.aspx](http://www.reading.ac.uk/ready-to-study/accommodation/university-accommodation.aspx)





# CLEVER CUISINE

Your stress-free pre-paid approach to eating during term time whilst living in halls.

## Welcome to Clever Cuisine

Now you can eat what you want, where you want, when you want. Enjoy meals that are expertly cooked, using only the freshest ingredients anywhere on campus. With discounts of up to 35% and free hot drinks, Clever Cuisine is inclusive for students living in catered accommodation or can be individually purchased by all other students by the term or year.

## So how does it work?

Very simply is the answer; money is added to your Campus Card automatically every Saturday morning. You then have seven days, until the following Friday, to spend your balance in any of the outlets listed in your meal plan.

For full information on catered room packages and the outlets available around campus please visit [www.hospitalityuor.co.uk/clever-cuisine/](http://www.hospitalityuor.co.uk/clever-cuisine/)

## Types of plans



**Platinum**  
Included at Dunsden Crescent, Wantage and Windsor Halls or as an optional add-on for self catered rooms

Our most comprehensive catering solution which covers 18 to 21 meals per week depending on how you choose to spend it. The Platinum plan is included in the price of most catered hall rooms and is automatically added to your campus card or can be purchased by any students living elsewhere. This plan is available in the widest selection of eateries. This plan includes unlimited soft drinks or coffee.



**Gold**  
Optional add-on for self-catered rooms

A scaled-down catering solution which covers around eight meals per week. It works in the same way as the Platinum plan, meaning you are free to spend it as you wish on breakfasts, lunches or dinners. This plan includes unlimited coffee each week.



**Silver**  
A plan designed especially for residents of St Patrick's which is also available for any other students to buy. It can be used at Eat at the Square, St Patrick's, Park Eat, The Dairy, Park Market, Roastology and Market Place. This plan also includes a free hot drink at dinner time at St Patrick's.

## Clever Cuisine plan tariff

Meal plan	Weekly cost	Autumn Term (12 weeks)	Spring Term (11 weeks)	Summer Term (8 weeks)	All year (31 weeks)
<b>PLATINUM</b>	£73.29	£879.48	£806.19	£586.32	£2271.99
<b>GOLD</b>	£44.87	£538.44	£493.57	£358.96	£1390.97
<b>SILVER</b>	£40.53	£486.36	£445.83	£324.24	£1256.43

For all prices and full details visit [www.hospitalityuor.co.uk/clever-cuisine/](http://www.hospitalityuor.co.uk/clever-cuisine/)

## How do I buy a plan?

**Catered room students** – you will be automatically subscribed to the relevant eating plan, the cost of which is included in your accommodation fees.

**All other students** – Clever Cuisine plans are sold either by the term or for the academic year (31 weeks)

For more information or to purchase a Clever Cuisine plan please visit [www.hospitalityuor.co.uk/clever-cuisine/](http://www.hospitalityuor.co.uk/clever-cuisine/). We will send you a link to the payment portal, once you have been allocated a room.

Payment is via credit or debit card. Please note, once a Clever Cuisine plan has begun it cannot be refunded.





## Your accommodation budget

**We know your budget is often a big concern. That's why utility bills, Wi-Fi and a basic level of contents insurance are all included in all our accommodation costs.**

Clever Cuisine, our catered package, which includes the Platinum plan, may suit you best if you're worried about how you'll budget, as you'll receive a weekly allowance of £73.29 during term-time (31 weeks) to spend on meals. At St Patrick's Hall, we have a Silver low-cost plan. This is intended to allow you to purchase your main meal each day during the 31 weeks of term via a weekly cash allowance of £40.53 – this allowance can be used at St Patrick's Hall, Park Eat, Eat at the Square or The Dairy.

Other living costs you must consider include laundry charges, the cost of food if you are in a self-catered hall, TV licence, any additional contents insurance to cover items such as your phone, any travel you may need to do and the money you'll spend socialising.

We suggest that you review your loan entitlement and other planned income to help you work out what you can afford to spend on accommodation. A summary table can be found on [page 15](#) with a complete overview of our accommodation offering.

For advice about managing your money and budgeting, visit our [Fees and Funding pages](#) and [RUSU's money advice webpages](#).



**Why not try the budget calculator provided by UCAS here?**




# ROOM TYPE OPTIONS

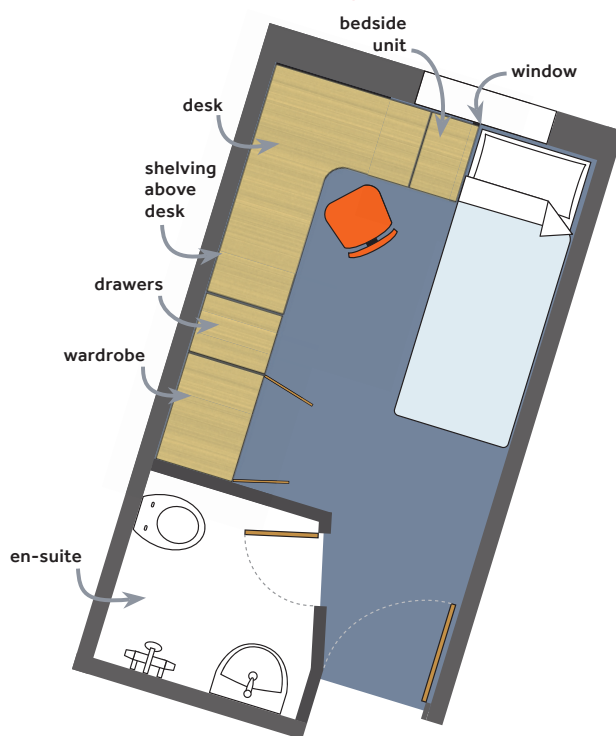
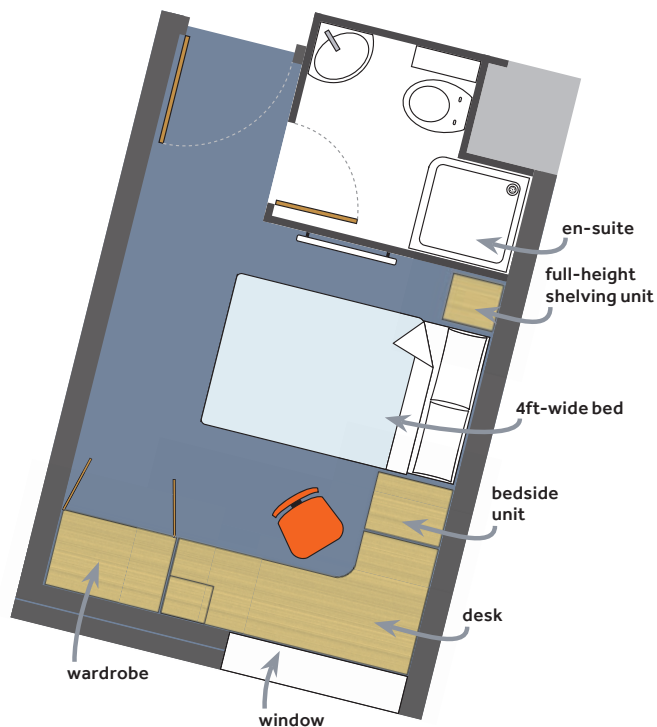
## PREMIUM EN-SUITE AND EN-SUITE ROOMS

Our **premium en-suite rooms** offer a high standard of accommodation in modern, well-appointed buildings. Premium en-suite rooms include a 4ft-wide bed, en-suite shower room and fitted furniture. All premium en-suites are self-catered rooms.

 **Take a virtual tour of one of our rooms [here](#)**



Our **en-suite rooms** offer a comfortable, well-equipped bedroom with fitted furniture, shelving units and an en-suite shower room, often in a 'wet room' style. There are both catered and self-catered en-suite rooms available.

 Room dimensions will be available in the *Key Fact Sheet* found on the **Me@Reading** current student portal.



### Example of a premium en-suite room





 **8 to 10** flatmates  
 Private bathroom

**£184.24** per week (self-catered)

### Example of an en-suite room



 **8 to 10** flatmates (up to 13 at St George's Hall)  
 Private bathroom

**£161–164.99** per week (self-catered)  
**£201.28** per week (catered)

### Available at

#### BENYON HALL



 4 mins

40 and 51 week contract lengths available

#### CHILDS/MACKINDER/STENTON HALLS



 4 mins

40 and 51 week contract lengths available

#### BRIDGES HALL



 10 mins

51 week contract length only

### Available at

#### BENYON HALL



 4 mins

40 and 51 week contract lengths available

#### SHERFIELD HALL



 4 mins

40 and 51 week contract lengths available

#### DUNSDEN CRESCENT



40 week contract lengths only

#### ST GEORGE'S HALL



 8 mins

40 and 51 week contract lengths available

#### GREENOW & MCCOMBIE HOUSE



40 week contract length only


**QL** Please note: Benyon Hall is the Quiet Lifestyle (QL) hall whilst the others only have areas within the halls.

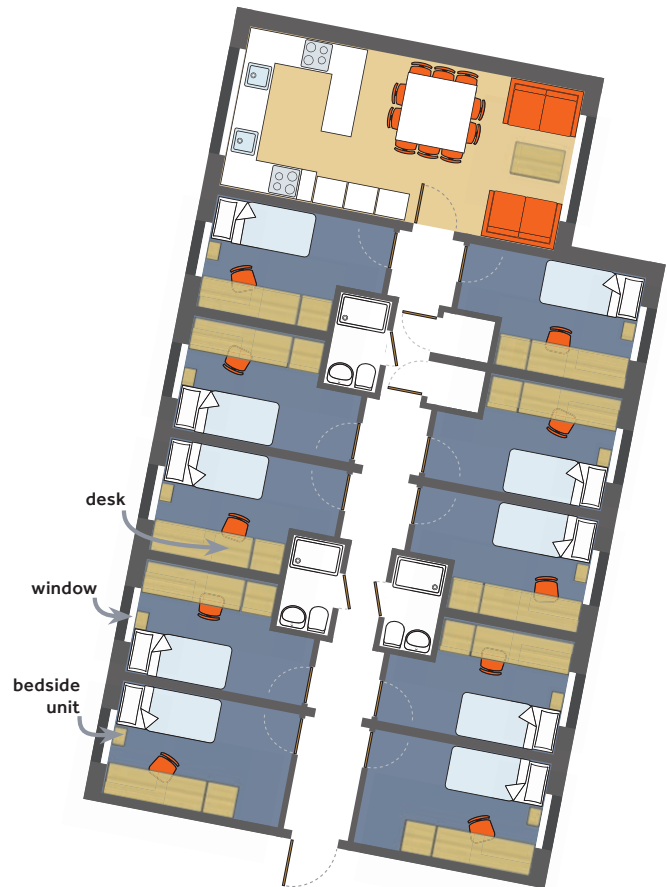
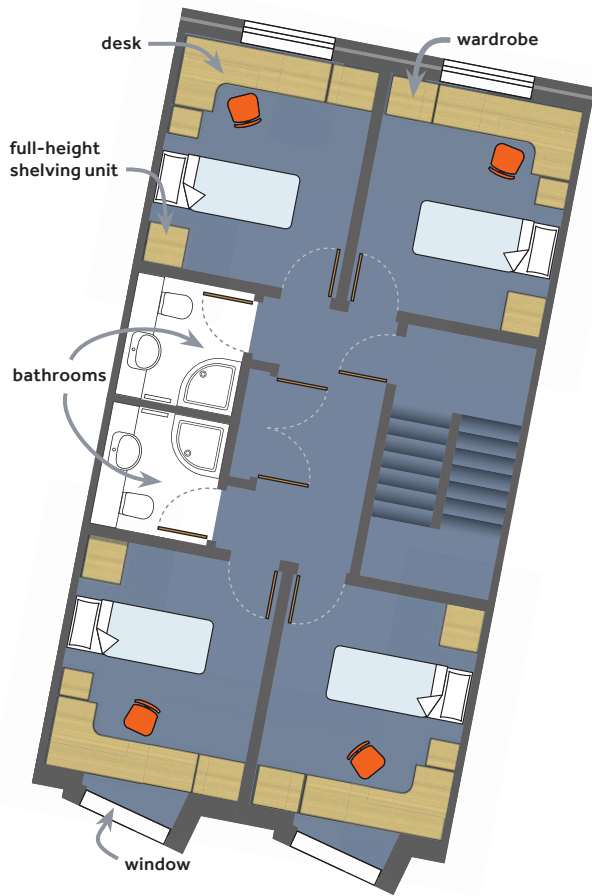


# TOWNHOUSE AND PREMIUM SHARED BATHROOM



Our **townhouse rooms** are arranged in modern, self-catered houses with 12 bedrooms arranged over three floors. Four bedrooms on each floor share two bathrooms. Bridges Townhouses have longer than standard single beds and Stenton Townhouses have 4ft-wide beds.

Our **premium rooms** with shared bathroom facilities have ten bedrooms which share three bathrooms. These flats have a modern kitchen, dining room and living area and are self-catered.

 Room dimensions will be available in the *Key Fact Sheet* found on the **Me@Reading** current student portal.



## Example of a Townhouse

 **12 flatmates**  
 Two bedrooms to one bathroom

**£161–164.99** per week (self-catered)

## Example of a premium shared bathroom

 **10 flatmates**  
 10 bedrooms share three bathrooms

**£144.48** per week (self-catered)

## Available at

### BRIDGES TOWNHOUSE



 10 mins

40 and 51 week contract lengths available

### STENTON TOWNHOUSE



 4 mins

40 week contract length only

## Available at

### BRIDGES HALL



 10 mins

40 and 51 week contract lengths available

 Take a virtual tour of one of our rooms [here](#)


**QL Please note:** Benyon Hall is the Quiet Lifestyle (QL) hall whilst the others only have areas within the halls.

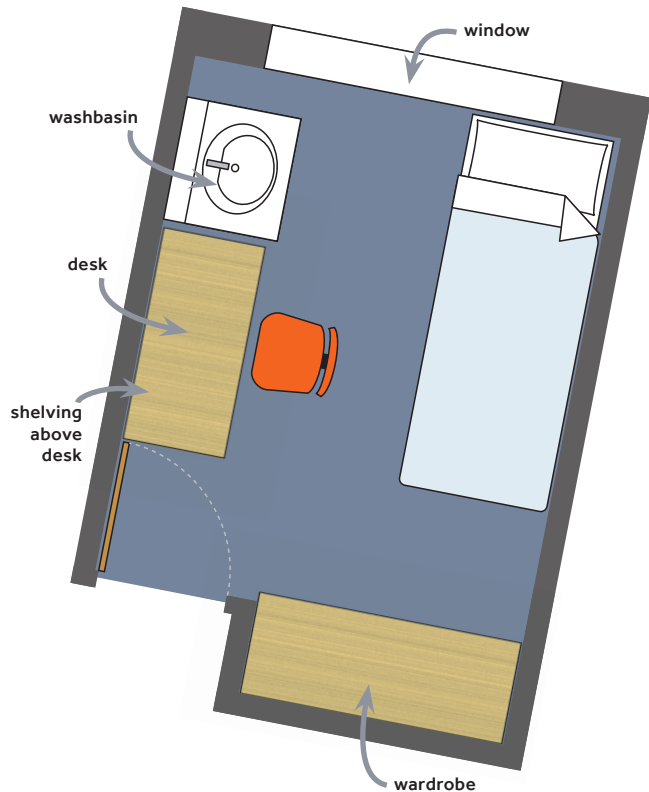


# UPGRADED AND STANDARD ROOM WITH SHARED BATHROOM FACILITIES

There are a range of halls offering shared bathroom facilities; many include a washbasin within the room.

At St George's and Wessex Halls, all the rooms have washbasins, have been upgraded and are self-catered. Kitchen facilities are shared with other residents in a traditional corridor-style arrangement.


 Room dimensions will be available in the *Key Fact Sheet* found on the **Me@Reading** current student portal.



At Wantage and Windsor Hall the rooms are part of the catered accommodation. Wantage Hall has both standard and upgraded rooms, with or without a washbasin. At Windsor Hall, all rooms have been upgraded and there are rooms with either a single, or 4ft-wide bed, with or without a washbasin.

## Example of a washbasin room



 Shared bathroom

 **Self-catered rent** per week

Upgraded with washbasin/  
upgraded with washbasin and double bed **£131.25 – £144.48**

Standard with/out washbasin/  
standard non-washbasin with double bed **£131.25 – £144.48**

 **Catered rent** per week

Upgraded rooms (Wantage and Windsor Halls) **£167.40 – £171.25**

Upgraded at Windsor Hall – single bed  
with washbasin **£169.95**  
non-washbasin **£167.40**

Standard with/out washbasin at St Patrick's Hall **£130.11**

Standard room: Wantage Hall **£155.50 – £163.20**

 **Take a virtual tour of one of our rooms [here](#)**

**QL Please note:** Benyon Hall is the Quiet Lifestyle (QL) hall whilst the others only have areas within the halls.

## Available at

### ST GEORGE'S HALL



40 and 51 week contract lengths available

### WANTAGE HALL



40 week contract length only

### WINDSOR HALL



40 week contract length only



### ST PATRICK'S HALL



40 week contract length only

### WESSEX HALL



40 week contract length only



# SELF-CONTAINED ROOMS

## Studio

Self-contained studios are available across Northcourt Avenue Houses, Benyon, St George's and Wessex Halls. This option is best suited to students who prefer their own private bathroom and kitchen. Please note: Studio rooms are for single occupancy with the exception of double studios which can accommodate up to two adults.

## Study Suite

A Study Suite includes a bedroom with a double bed and a private study room. The bathroom and kitchen facilities are shared with other students in a large detached house. There are a limited number of Study Suite's offered at Northcourt Avenue Houses, which are suitable for up to two adults.

## Study Set

In St Patrick's Hall we have four Study Sets, each having a bedroom and a separate lounge. Two of the four share a bathroom and all four share one kitchen, accessible by going outside. Study Sets are for single occupancy.

Rent per week	
Studio at St George's and Wessex Halls	<b>£206.85</b>
Study Set at St Patrick's Hall	<b>£144.48</b>
Studio with double bed at Northcourt Avenue Houses and Benyon Hall	<b>£216.30</b>
Study Suite at Northcourt Avenue houses	<b>£184.24</b>

## Couples, families and mature students

We also offer accommodation for couples, families and mature students at Creighton Court, Northcourt Houses, St Patrick's Hall, St George's/ Wantage/ Wessex Halls, Greenow House and Sherfield Hall. Visit [www.reading.ac.uk/ready-to-study/accommodation/accommodation-families-mature-students.aspx](http://www.reading.ac.uk/ready-to-study/accommodation/accommodation-families-mature-students.aspx) to find out more.



Take a virtual tour of one of our rooms [here](#)



## Available at

### NORTHCOURT AVENUE HOUSES



8 mins

51 week contract length only

### ST GEORGE'S HALL



8 mins

40 and 51 week contract lengths available

### ST PATRICK'S HALL



in hall

40 week contract length only

### WESSEX HALL



10 mins

40 week contract length only



# SUMMARY PAGE

Room type	Benyon Hall	Bridges Hall	Childs Hall	Creighton	Dunsden Crescent	Greenow & McCombie	Mackinder Hall	Northcourt Houses	Sherfield Hall	St George's Hall	St Patrick's Hall	Stenton Hall	Wantage Hall	Wessex Hall	Windsor Hall
<b>CATERED</b>					✓						✓		✓		✓
<b>SELF-CATERED</b>	✓	✓	✓	✓		✓	✓	✓	✓	✓	✓	✓	✓	✓	
<b>NUMBER OF ROOMS AVAILABLE</b>															
<b>ROOM (SHARED BATHROOM FACILITIES)</b>															
Standard									4	7			78		
Standard with double bed								5							
Upgraded with single bed															11
Upgraded with larger bed															35
Premium		394													
Townhouse		192										300			
<b>ROOM WITH WASHBASIN (SHARED BATHROOM FACILITIES)</b>															
Standard								7		296			153		
Upgraded										102			9	201	
Standard with double bed								7							
Upgraded with single bed															14
Upgraded with double bed										3					173
<b>ROOM WITH EN-SUITE SHOWER</b>															
En-suite	362				130	130			336	291					
Premium en-suite	16	59	584				563					402			
Premium en-suite (double occupancy)	5														
<b>STUDIO ROOM AND STUDY SUITE</b>															
Studio room								1		26					1
Study suite								3							
Study set											4				
<b>ACCOMMODATION SUITABLE FOR FAMILIES AND COUPLES</b>															
Room with double bed (shared bathroom)								6		2					
Studio with double bed	2							4							
One-bed flat				17				2	5	6			1		
Two-bed flat				7		1					1				
Quieter lifestyle	QL	QL	QL				QL					QL			
Single gender	SG	SG	SG				SG		SG	SG		SG			



# FREQUENTLY ASKED QUESTIONS

## What's included in each room/flat?

All bedrooms are furnished with:

- bed, mattress and mattress protector
- desk and desk chair
- shelves and wardrobe.

All kitchens are equipped with:

- microwave
- fridge and kettle
- toaster.

The kitchens in the self-catered areas also include cookers and freezers. In addition to your personal items, you will need to bring\*: cookware (such as pots and pans).

The Premium en-suite rooms at Park Group and the Stenton Townhouses have induction hobs so please bring suitable pans; crockery and utensils; towels, bed linen, duvet and pillows (the Premium en-suite and Stenton Townhouses rooms require linen to fit 4ft-wide beds) (rooms in Bridges Hall require a sheet to fit a double bed as they are a non-standard size and longer than a standard single bed).

\*a more detailed list of what you do and don't need to bring with you to your accommodation is included in your arrival information, see below.

## What information will I receive before I arrive?

Before you arrive in hall you will be asked to complete a mandatory E-induction. This will include valuable arrival information, details of what to bring, a link to your *A-Z Halls Guide* and an insight into hall life to prepare you for your time in hall.

## Can I live in hall accommodation beyond the first year?

We have a limited number of rooms available for returning students. Details are made available during the first term.

## Can I have my special requirements accommodated?

The University's Disability Team works closely with the Accommodation Office to assist students' with special requirements. They provide support and advice services. Contact [disability@reading.ac.uk](mailto:disability@reading.ac.uk) or **0118 378 8921** as soon as possible if you need an accessible room or have a particular requirement of your room due to a disability.

## Do you have accommodation for families and couples?

Yes, see our Families, Couples and Mature students accommodation guide [here](#).

## Can I bring my car or bicycle with me?

Except in very specific cases students living in halls are unable to bring a car and the area around the University is for local residents parking only. For all information regarding car, motorcycle or visitor parking please see

[www.reading.ac.uk/parking](http://www.reading.ac.uk/parking)

All halls are within easy walking distance of both campuses and conveniently close to excellent bus routes serving supermarkets, Reading town centre and train station.

Cycling is encouraged and lockable bike sheds/racks are available in all of the halls. The basic contents insurance included with your room **does not** protect bikes, laptops, phones are other items outside your room. You may wish to arrange alternative insurance.

## Can I access the internet from my hall room?

Wi-Fi is available across the halls. This is a University IT service delivering broadband access to the University campus data network and the internet.

## Do I need to move out for the Christmas and Easter vacations?

The residency periods include the Christmas and Easter vacations there is no need to move out of your hall room during these times.

## What is a shared bathroom?

A shared bathroom means shared bathroom facilities as opposed to your own private en-suite. Toilets and showers are arranged into separate lockable cubicles accessible to all residents within that flat.

## Do shared bathrooms have defined genders?

The bathrooms within Wantage and Wessex Halls have defined gender bathrooms within the hall corridors. Where shared bathrooms are in mixed gender flats, these are unisex.

## ACCOMMODATION GUIDE

 For more information, please contact:

### Accommodation Office

Carrington Building  
University of Reading  
Whiteknights  
Reading RG6 6UA  
United Kingdom

[accommodationonline@reading.ac.uk](mailto:accommodationonline@reading.ac.uk)

Tel +44 (0)118 200 5011

[www.reading.ac.uk/accommodation](http://www.reading.ac.uk/accommodation)

### Please note

All photos are examples of facilities on offer and individual rooms may vary. Whilst every effort has been made to ensure that the details outlined in this booklet are correct at the time of publication, some arrangements may be subject to change.

The University of Reading is committed to providing quality student accommodation and fully complies with the Student Accommodation Code. See [www.thesac.org.uk](http://www.thesac.org.uk) for more details. The code covers, among other matters, health and safety, maintenance and repair, and relationships between the University and student tenants. It outlines best practice and provides benchmarks for the management – and quality – of student housing in the sector.

